



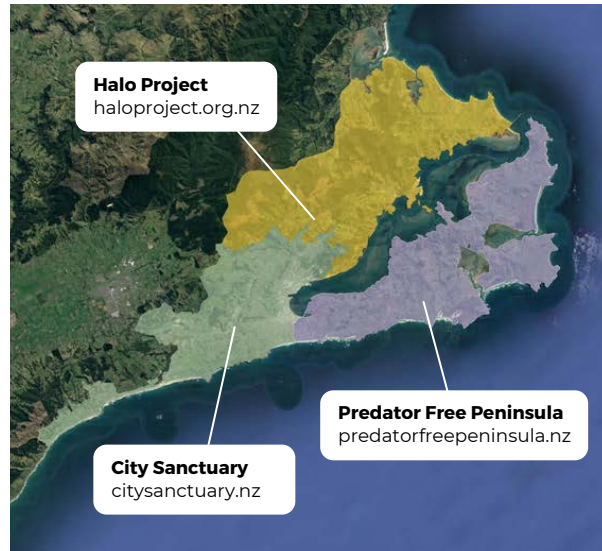
Become a backyard pest detective and find out what's lurking in your backyard!

Chew cards are a safe way of detecting and identifying pest animals such as possums, rats, stoats, mice and hedgehogs.

Each pest species leaves a unique bite mark, meaning you can figure out what type of trap you need to protect native wildlife in your backyard.

Chew cards are non-toxic and safe to use around pets and kids.

Ingredients: Hypoallergenic synthetic peanut lure, icing sugar, flour, oil and blue dye.




City Sanctuary is one of three Predator Free Dunedin projects working together to get rid of possums, rats and stoats from Dunedin's urban and rural landscapes by 2050.

Our vision is to create a vibrant sanctuary in Dunedin city where wildlife thrives and communities are leading predator control in backyards and reserves.

 info@citysanctuary.nz

 www.citysanctuary.nz

 [@citysanctuarynz](https://www.facebook.com/citysanctuarynz)

 [@citysanctuarynz](https://www.instagram.com/citysanctuarynz)

CHEW CARD

INSTRUCTIONS

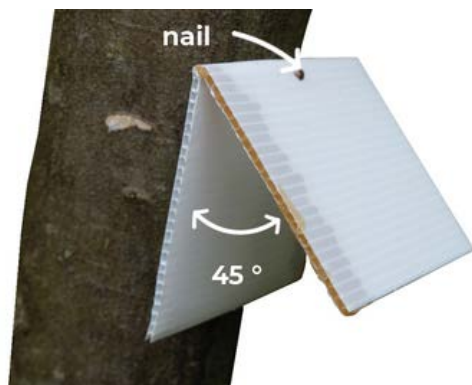


INSTALL YOUR CARDS

- 1 Find the best place to put your chew cards - try near rubbish and compost bins, along fence lines or hedges, and at the base of trees.

Space cards at opposite ends of your property to increase likelihood of detecting pests.

- 2 Fold the card in half and nail it to a tree, fence or post. It should be nailed 20-30 cm from the ground and should be open at a 45-degree angle



- 3 Date and number the card so you know how long it has been out for.

CHECK YOUR CARDS

Leave the cards out for 5 - 7 dry nights and then check for bites. If nothing has nibbled your cards, leave them out for a maximum of 2 weeks then throw them away.

Tip: Pests don't like getting wet so are less likely to chew on a card if it's raining.

If something has munched on your card it's time for some detective work to find out who's the culprit!

WHOSE CHEWS?

When a predator chews your card it leaves a unique bite or tooth mark impression.

Use this guide to identify some of the more common chew marks.

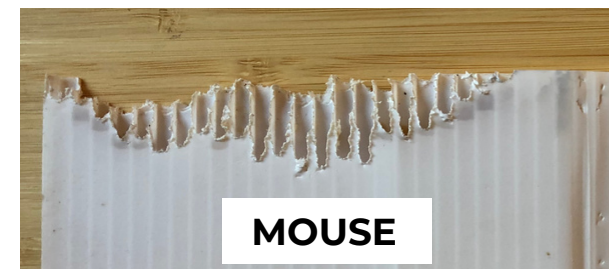
If you can't figure out what has chewed your card, contact us and we'll help you!

HELPFUL WEBSITES

- www.pestdetective.org.nz
- www.landcareresearch.co.nz
- www.citysanctuary.nz



Rats use their incisor teeth to shred a card, leaving ragged edges with random patterns. Look for blunt teeth marks that are about 2 mm wide.



Mice nibble one side of a card, leaving the hollow parts. Look for teeth marks or punctures that are less than 1.5 mm wide.



Possoms leave crushed margins that can sometimes look like water damage. They can also leave moustache shaped teeth marks that are 5 - 7 mm wide.